

# CLICKDECK®

MODULAR SUBFLOOR SYSTEM



BROCHURE 2022

BUILD FASTER, BUILD SMARTER WITH CLICKDECK®

# MODULAR ALUMINIUM SUBFLOOR SYSTEM

# ALUMINIUM SUBFLOOR SYSTEM

**BUILD FASTER, BUILD SMARTER WITH CLICKDECK®**

## Why aluminium over a timber frame?

**Longevity** - Marine grade powder coated aluminium will far outlast any timber subframe.

**Low height solution** - As per BCA (Building code of Australia) Vol 2 there should be a minimum ground clearance of 150mm to the underside of any timber structure using H3 or less treatment.

**Faster installation** - The engineered system has been designed to connect together and build faster allowing projects to run quicker and on budget.

**Spans** - Aluminium is a much stronger building material than timber which allows for greater comparative spans.

**Termite proof** - Timber attracts termites, remove that risk with a termite proof aluminium subframe.

**Non combustible frame system** - Perfect for bushfire rated areas and external building projects.

**Straight and level material** - Extruded aluminium will not warp or bow like timber.



28 Profile



55 Profile



110 Profile



Pedestal supports



Post supports

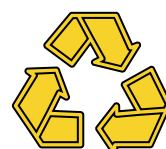
COMPATIBLE SURFACES

DECKING

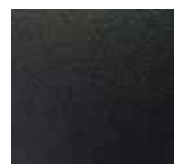
PAVING

LAWN

AUSTRALIAN MADE &  
ENVIROMENTALLY FRIENDLY



POWDERCOATED IN  
TEXTURA MONUMENT



## WHAT IS THE CLICKDECK SYSTEM?

The Clickdeck system's innovative modular design allows for fast installation, a range of smart footing solutions and multisurface support capability.

**High quality surface materials like hardwood, composite timber or pavers with long lifespans requires a quality durable subfloor to match.**

The Clickdeck® system is a **complete building system** that can provide a subfloor solution for decking, tiles, artificial lawn and many more.

The **versatility** of having multiple footing solutions and capabilities in low, mid and elevated installations ensures an all in one solution.

Clickdeck is **manufactured in Australia** from local aluminium providing durability to withstand extreme conditions.

Clickdeck® has been Australian **engineered** and vigorously tested to outperform Australian building standards.





# APPLICATIONS

## RESIDENTIAL AND COMMERCIAL APPLICATIONS

- Decking subfloor
- Tile support system (does not penetrate waterproof barrier)
- Temporary flooring solution / Event flooring solution
- Shed subfloors
- Disabled ramps
- Raised floor system / Raised access floors



# CAPABILITIES

## **SURFACE CAPABILITY:**

- Composite decking (compatible with all brands)
- All natural timber decking boards
- Structural tiles and pavers
- Yellow tongue flooring / structural flooring
- Synthetic grass
- Enquire for other surface capabilities

## **PRODUCT SUPPLY:**

- Standard length supply - Customer to cut onsite : Build in any shape
- Modular - cut to customer lengths and pre assembled
- 2.4m, 3.6m, 4.8m, 6m lengths , Joiners provided to extend profiles length.

## **SERVICE AND SUPPORT:**

- Estimating service
- Full design service
- In house engineering and construction drawings
- Fast manufacturing lead times
- Australia wide delivery
- Onsite assistance and installation

**Australian Standards compliant : AS1164.2 , AS1170**

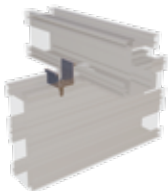
**Minimum Build height : 65mm incl pedestal system**



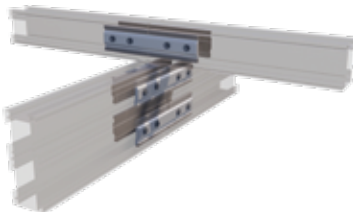
# SYSTEM DIAGRAM



Corner Bracket



Hold Down Clip



Joiner



Tile Rubber Strip  
(Allows for Pavers/tiles to be installed)



Adjustable Pedestal System



Aluminium Post



55mm Profile



110mm Profile



28mm Profile



**TRY OUR INSTANT ONLINE QUOTE SYSTEM**

[www.clickdeck.com.au/quote/](http://www.clickdeck.com.au/quote/)

**SEND US A QUOTE / DESIGN REQUEST**

email us at [info@exolux.com.au](mailto:info@exolux.com.au)

**CALL TO US FOR MORE INFORMATION**

**(03) 8202 5166**

**CLICKDECK works with all natural hardwood and composite decking.  
Below is a list of trusted suppliers:**



**WOODeVO.**



**AVAILABLE AUSTRALIA WIDE**

# SYSTEM COMPONENTS



## 28 ALUMINIUM PROFILE

Used to form the structure of the system

Can be used as a joist or bearer



## 55 ALUMINIUM PROFILE

Used to form the structure of the system

Can be used as a joist or bearer



## 110 ALUMINIUM PROFILE

Used to form the structure of the system.

Can be used as a joist or bearer  
Allows for longer spans and reduces the amount of footings needed.



## CORNER BRACKET

- Used to create 90 degree connections.
- Used to create fascia boards supports.
- Can be bent to make angled joins.



## HOLD DOWN CLIP

Used to secure the joist to the bearer.

It can also be used to fasten down the joist/bearers to any surface eg. Timber posts



CLICKDECK patented products.



### ADJUSTABLE POSTS

A height adjustable post that supports the framing system and allows for easy installation on a range of surfaces.

Utilizing the 55mm profile as the vertical upright this can be cut at any length and the post bracket allows for a further 40mm adjustment.



### ADJUSTABLE PEDESTALS

A height adjustable footing that supports the framing system and allows for easy installation on solid surfaces

Available from 10mm to 1000mm tall. The pedestal can be adjusted at any time allowing for easy levelling

Holds up to 1 Tonne each



### JOINER

Used to extend the length of both the bearers and joists to the desired length.  
(55mm profile takes 2 per join)  
(110mm profile takes 4 per join)



### TILE SUPPORT STRIP

Rubber strip that provides a solid grip when using tiles and pavers.



### END CLIP

Retains deckboards and pavers onto the perimeters of the support frame.

# PROJECT COMPARISON

CLICKDECK®  
ALUMINIUM  
SUBFLOOR SOLUTION

TRADITIONAL TIMBER  
BUILD

STEEL  
CONSTRUCTION

OVERALL PROJECT COST	\$	\$ \$	\$ \$ \$
AVAILABILITY OF MATERIALS	Fast local Australian stock	World Wide Shortage	Long processing times
VERSATILITY	- Ultra Low, mid and elevated height solutions. - Supports multiple surfaces - Build in any shape or size	Basic traditional installation methods. Low height issues	Heavy to use Requires specialist installation
CORROSION RESISTANCE	High natural corrosion resistance Long term solution	Rots easily with water	If unprotected will rust, all cuts need to have additional protection
EASE OF USE	Lightweight easy to install system. Easy to drill and cut	Warped and bowed timber can be hard to work with.	Extremely heavy to lift and hard to drill.
SPEED OF INSTALLATION	★ ★ ★ ★ ★	★ ★	★ ★



- Height adjustable footing solutions
- Fast, easy installation
- Non-combustible Frame
- Multisurface support
- Australian engineered and certified
- Recycled materials

## KEY FEATURES



### Strong Structure

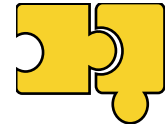
ClickDeck® has been designed using high grade Aluminium and stainless steel providing unparalleled strength and longevity.



### Easy Assembly

The lightweight frame and range of brackets / clips makes this the easiest system to build.

The adjustable footing system makes levelling quick and easy.



### Fully Customisable

ClickDeck® can be built in all shapes and sizes. It can also support various types of surfaces.



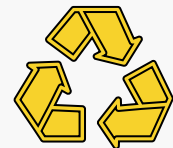
### Fire Resistant

ClickDeck® is made from a non combustible aluminium frame. The perfect choice to withstand Australian conditions.



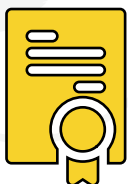
### Australian Made

The system is manufactured, customised and assembled locally in Melbourne and can be provided in kit form for ease of installation.



### Environmentally Friendly

The system components are made from recycled aluminium and plastic.



### Patented System

Australian engineered and designed. The original ClickDeck® system. International patents apply



### Fast installation

ClickDeck's® Innovative design allows for super quick installation, Saving you time and money.



### Versatile Height

ClickDeck® is a versatile system that can accommodate installations as low as 65mm.



# CLICKDECK<sup>®</sup>

BY EXOLUX

## MODULAR DECKING SYSTEM



Follow us on:



Ph: (03) 8202 5166  
Website: [www.clickdeck.com.au](http://www.clickdeck.com.au)  
Email: [info@exolux.com.au](mailto:info@exolux.com.au)  
Address: 2/5 Kelletts Road, Rowville VIC  
3178

EXOLUX  
MODULAR SUBFLOOR SYSTEMS